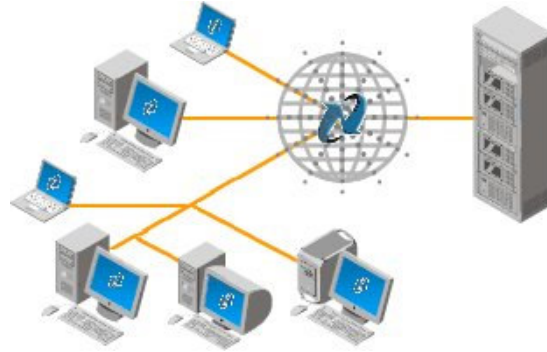


Could you continue to run your business if you lost your data ?

DTI research suggests **70%** of businesses that lose important data **fail** within 18 months.

Effective's new RBS Solution allows you to **automatically** back up any number of computers across the Internet to a secured storage site at any time of the day or night.

**Key Features :**

- Remote back-up of laptop, desktop PC or server(s) across the Internet to secure storage
- Back-up process encrypts your data preventing unauthorised access during transmission
- Data remains encrypted during storage on Effective's servers
- Runs on all versions of Windows 95/98/ME, NT, XP, 2000, and 2003 (desktop and server)
- Solutions also available for MAC and Unix/Linux systems
- Completely automated incremental back-up of all key data selected by the end-user
- User-controlled file restores on-demand
- Holds multiple copies of data allowing restore from a given point in time

Benefits :

- Eliminates reliance on human action to perform back-ups / changes tapes
- Eliminates costs of back-up media (tapes etc) & maintenance of back-up software
- Eliminates delay in restoring files – data is available to you 24 hours x 7 days
- Enhances disaster recovery capability – backed-up data is automatically held off-site
- Built-in encryption holds your data more securely than on traditional tape
- Automatically recalibrates before each back-up, ensuring software updates are covered

Pricing :

- **Desktop / Laptop PC** –from just **£9.99** per month (Corporate discounts available for multiple PCs)
- **Corporate Servers** – pricing solutions from just **£29.99** per month

-- 0 --

What's your peace of mind worth ? It's your call – 0845-838-5331 - sales@effects.co.uk

Effective Systems has provided cost-effective, reliable quality IT services and support to small / medium-sized businesses in London and the South East since 1997.

To learn more visit <http://www.effects.co.uk/>

Data Centre - Key Features :

Effective's RBS Solution server environment is housed in a Class-1 commercial data centre which meets the following specifications :-

CLIMATE

- Average temperature: 220C/720F with limits of 180C/640F and 250C/770F
- Humidity: 50% +/- 10%
- Redundant air-conditioning
- Climate control performed according to ETS300019 class 3.1 "Telecom Centers"

POWER

- Diesel generator backup, minimum 16 hours backup
- 220V AC, 400V AC, UPS 220V AC optional, -48V DC optional
- Clean earthing and overvoltage protection
- Dual power feeds individually breakered to each cabinet

SECURITY

- Access: 24 hours a day and 7 days a week
- Only authorised staff and registered customer staff are allowed on-site
- Security zones using designated alarm and card-key access
- Logging of all entries Monitoring of all facilities CCTV with archiving
- Suntone Certified

FIRE PROTECTION

- Gas fire extinguishing system
- Early warning laser smoke detection (VESDA)
- Fire-retarding walls (F60)

CABLING

- Power cabling under raised floor
- Data cabling carried via overhead cable trays

NETWORK & CONNECTIVITY

- 1 x 100Mbps transit direct to Level(3) + 1 x 100Mbps transit direct to AboveNet
- transit SLAs give us guarantees on availability and against latency and packet loss ensuring quality connectivity
- High performance gigabit capable core routers
- 1Gb/s Ethernet links to each rack
- Private management/backup LAN
- Network equipment from HP, Cisco, 3com and Allied Telesyn
- Remote management — web reboot, serial consoles and KVM over IP